

PEMAC PROJECTS PVT. LTD.

HEAD OFFICE : W-256, T.T.C.
INDUSTRIAL AREA, MIDC, RABALE,
NAVI MUMBAI, MAHARASHTRA
400701

PH.- +91-7045341212/ 9029757114

E-MAIL ID: sales@pemacprojects.com

WEBSITE : www.pemacprojects.com

UNIT - I

ADDRESS : W-256, T.T.C. INDUSTRIAL
AREA, MIDC, RABALE, NAVI MUMBAI,
MAHARASHTRA 400701

UNIT - II

ADDRESS : R - 63 , T.T.C. INDUSTRIAL
AREA, MIDC, RABALE, NAVI MUMBAI,
MAHARASHTRA 400701

UNIT - III

ADDRESS : R - 882 , T.T.C.
INDUSTRIAL AREA, MIDC, RABALE,
NAVI MUMBAI, MAHARASHTRA
400701

**An ISO 9001:2015 Certified
Company**

TECHNO-COMMERCIAL OFFER FOR

RAJMANYA AGRO

Kind Attn.: Mr. Dabhade

Aundh tal. Khatav , Satara, maharashtra

CONTACT NO.- +91 94224-42521

Email id: dabhade1964@gmail.com

**100 TONS ELECTRONIC WEIGH
BRIDGE**

Offer Reference no. - PPPL/D/22-23/00242

Date: 25th April 2023

REF: PPPL/D/22-23/0242

DATE: 25/04/2023

COMMERCIAL OFFER

SR NO	DESCRIPTION	TOTAL AMOUNT (INR)
1	100 TONS ELECTRONIC WEIGH BRIDGE Type: Pit less/Pit type, Capacity: 100t, Platform size: 16m x 3m	11,40,000.00
	TOTAL AMOUNT – ELEVEN LAC FORTY THOUSAND INDIAN RUPEES ONLY (EX WORK-MUMBAI,INDIA)	11,40,000.00 PLUS 18% GST EXTRA

REF: PPPL/D/22-23/0242

DATE: 25/04/2023

2.SCOPE OF SUPPLY

PEMAC scope of supply/work

1. MS Platform duly painted, steel as per IS:2062
2. Digital Load cells with mountings – 8 Nos. – Precision Transducers make
3. Junction box & shielded cables
4. Intelligent terminal* with 2 lakh memory & pen drive port for data collection OR weight indicator with RS-232C port & standard weighing software
5. Jumbo display (50 mm) for vehicle driver
6. Civil drawing of foundation work
7. Transport up to site
8. Supervision of installation
9. Govt. stamping

***Note:** Computer is not required with Intelligent Terminal* because it has in-built memory & gives print out when printer is connected to it.

Customer's scope of supply/work

1. Printer & Computer (if required by client)
2. RCC civil foundation & weigh-cabin (6' x 4' or more) with electrical supply
3. Separate earth pit for load cells & 1.5" PVC pipe for loadcell cable conduit
4. Platform unloading, hydra & single phase welding for erection
5. Standard weights & two unskilled labor

Warranty: 12 months from the date of commissioning or 15 months from the date of dispatch whichever is earlier against any manufacturing defects.

REF: PPPL/D/22-23/0242

DATE: 25/04/2023

TERMS AND CONDITIONS

- Any License or Permission applicable on the works carried out, in the country/state where the Project is implemented under works contract, shall be managed by the PURCHASER'S side.
- **PAYMENT TERMS:**
 - 50 % Advance
 - 50 % Against Proforma before dispatch
- **EFFECTIVE DATE:**

Unless specifically agreed otherwise, the effective date of the purchase order shall be the later of dates on which,

 - A. Receipt of technically and commercially clear Letter of Intent/Order
 - B. Receipt of Advance Payment as per mutually agreed payment terms.
- **INSPECTION:** Third Party/ Visual inspection of equipment at our works/ our sub-Vendors shall be offered wherever mutually agreed. The supplier shall give 10 days' notice to the purchaser for Third Party/ visual inspection. In case it is not possible for the purchaser to be physically present for the inspection on the appointed date the supplier shall dispatch the material as if the materials are deemed to have been
- inspected and the purchaser expressly do hereby agree to release the payment as per the payment terms specified herein.
- **DELIVERY:** As per finalization PEMAC will supply all equipment's within a period of 5 to 6 weeks, from the date of clear order and advance received.

THANKS

For PEMAC PROJECTS PVT. LTD.

REF: PPPL/D/22-23/0242

DATE: 25/04/2023

TECHNICAL SPECIFICATIONS

LOAD CELL

- Make - Precision Transducers
- Type - Digital, Double Ended Shear Beam [Ball & Cup Assembly]
- Capacity- 30 t each
- No. of load cells – 8
- Inbuilt surge voltage protection
- Shock proof. Safe overload - 150 %
- Ultimate over load - 300 %
- Hermetically sealed, IP 68 protection
- No constrictors/check rods required
- Excellent self-restoration of load point
- Lifetime repairable



INTELLIGENT TERMINAL

- Advanced micro-controller based technology
- Inbuilt line filter
- Auto zero maintenance
- 13 mm red LED main display, 50 mm parallel display
- 2 line 20-character LCD display with back light
- Memory of 2 lakh transactions
- Pen drive port for data collection
- RS 232-C port for computer interface
- Operating voltage: 230 V, 50 Hz, 1-Ø AC



JUNCTION BOX

- Environmental Protection - IP65
- Material of construction - ABS plastic
- Double compression glands
- Inbuilt surge voltage protection

STEEL PLATFORM

- Material of construction - Mild Steel as per IS:2062, Grade E250
- Beam Make - Mahamaya/SKS/CG/Monnet
- Plate Make - SAIL/Jindal
- Material test certificate available
- Painting - structure shall be painted with 1 coat of primer & 2 coats of enamel paint

REF: PPPL/D/22-23/0242

DATE: 25/04/2023



Pit Type Weighbridge



Pit less Weighbridge



COROPORATE PROFILE



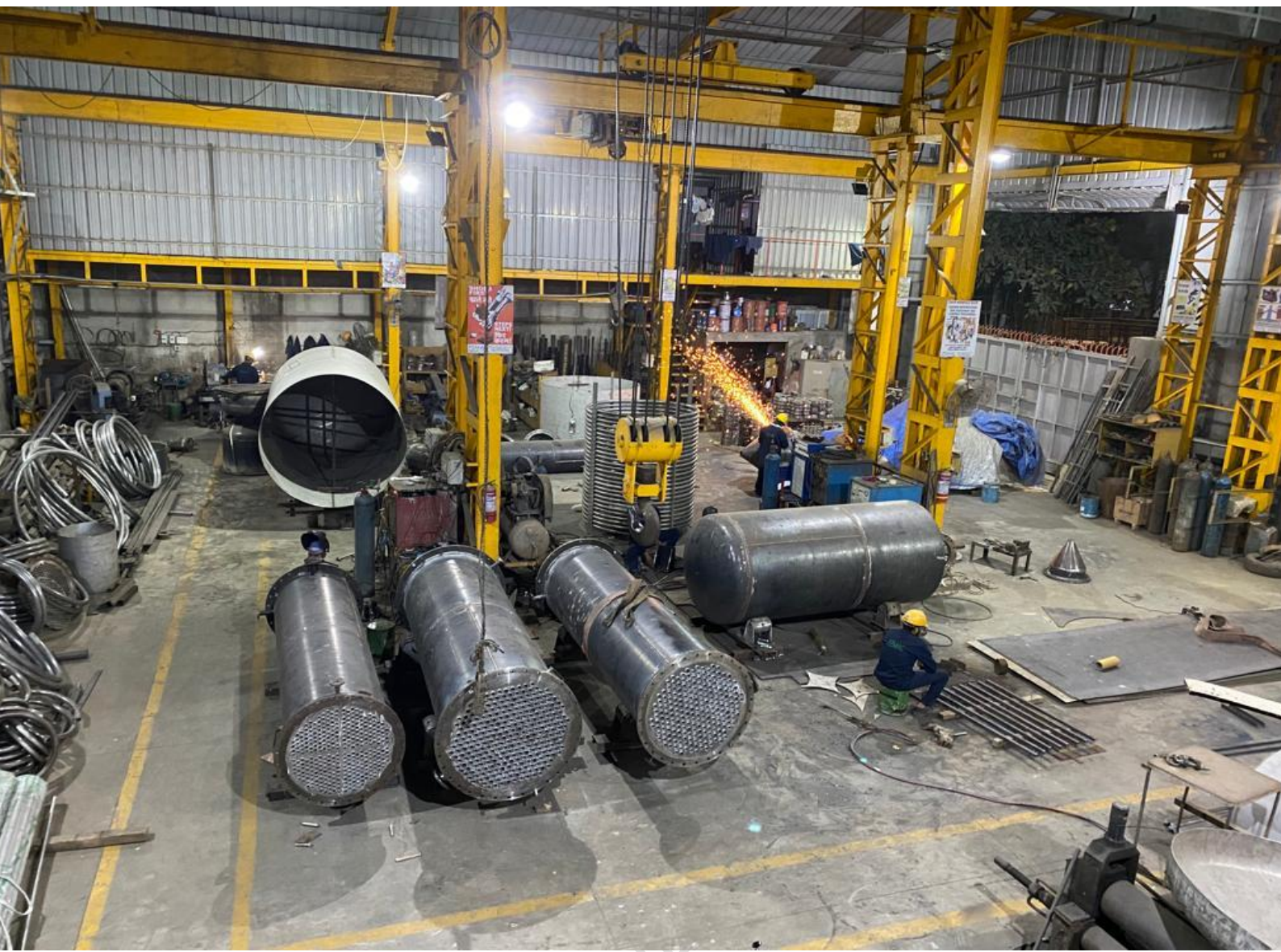
PEMAC Is One of The Fast Growing Project Engineering Company....Your Reliable EPC Project Partner....

PEMAC is one of the leading designers, manufacturer & supplier of Oil Extraction, Edible Oil Refinery, Oleochemicals & Feed Plants in India & Abroad. Serving more than 20 countries around the world.

We also offer Effluent Water Treatment Plants, Zero Liquid Discharge Systems, Soap Stock Splitting Plants, Pilot Plants & Filtration Equipment's for related Industry. PEMAC is unique in category because we take off turnkey projects with Engineering, Fabrication, Construction & Consultancy. Slowly & steadily PEMAC is emerging as a Leader in the field of Edible Oil Industry due to the trust shown by our valuable customers all over the world by giving repeat orders. This reflects the trust which we are able to develop & developing among our customers in edible oil industries. We are able to achieve this by giving prompt after sales service support to our clients without hampering their production on time. Thanks to our after sales service Team. We are having our manufacturing unit cum office located in Navi-Mumbai, Maharashtra equipped with modern manufacturing facilities & practices. The great geographical location of our factory & office helps us to deliver our client best in class quality Edible Oil Plants at reasonable cost in shortest time span.

www.pemacprojects.com





MANUFACTURING UNIT I





MANUFACTURING UNIT II & III







OUR PROJECTS







REF: PPPL/D/22-23/0242

DATE: 25/04/2023

LIST OF PROJECTS REFERENCE

Indian Clients

SEED/OIL	LOCATION	CAPACITY	TYPE OF PROJECT	YEAR OF PLANT COMPLETION
SUNFLOWER	TAMIL NADU	50TPD	CONTINUOUS SUNFLOWER REFINERY PLANT WITH ERECTION & COMMISSIONING	2006
RICEBRAN	TAMIL NADU INDIA	30 TPD	PHYSICAL REFINERY PLANT	2008
RICEBRAN	TAMIL NADU INDIA	125 TPD	CONTINUOUS SOLVENT EXTRACTION PLANT	2008
COCONUT OIL	TAMIL NADU INDIA	50 TPD	RIFINERY PLANT	2008
RICEBRAN	HYDERABAD, ANDHRA PRADESH	100 TPD	CONTINUOUS REFINERY FOR RICE BRAN	2008
MULTIPURPOSE OIL	TAMIL NADU INDIA	50 TPD	CONTINUOUS PHYSICAL REFINERY PLANT	2009
SUNFLOWER OIL	TAMIL NADU INDIA	125 TPD	CONTINUOUS BLEACHING SECTION	2011
SUNFLOWER OIL	TAMIL NADU INDIA	80 TPD	DEODORIZING SECTION	2011
RICEBRAN	TAMIL NADU INDIA	50 TPD	PHYSICAL REFINERY PLANT	2012
SUNFLOWER OIL	TAMIL NADU INDIA	-	TECHNICAL CONSULTANCY FOR PROCESS & COST CUTTING SUPPLY OF EQUIPMENTS & SPARE PARTS, IN SUNFLOWER OIL PLANT	2012
RICEBRAN	MAHARASHTRA WADA	100 TPD	CONTINUOUS PHYSICAL REFINERY PLANT	2012
RICEBRAN	TAMILNADU	30 TPD	MULTIPURPOSE & RICE BRAN OIL PLANT	2012
RICEBRAN	TAMILNADU	30 TPD	PHYSICAL REFINERY PLANT FOR RICE BRAN WITH ERECTION & COMMISSIONING	2012
CATTLE FEED PLANT	KARNATAKA	250 TPD	AUTOMATIC CATTLE FEED PLANT.	2013
PALM OIL	MAHARASHTRA	200 TPD	DRY FRACTIONATION UNIT	2013

REF: PPPL/D/22-23/0242

DATE: 25/04/2023

DE-GUMMING SECTION	KARNATAKA	80 TPD	CONTINUOUS DE-GUMMING SECTION WITH ERECTION & COMMISSIONING	2013
PALM	GUJARAT	50 TPD	DRY FRACTIONATION PLANT	2014
GROUNDNUT	GUJARAT	80 TPD	CONTINUOUS REFINERY PLANT	2014
RICEBRAN	KARNATAKA	50 TPD	CONTINUOUS PHYSICAL REFINERY PLANT	2015
SOYBEAN	GUJARAT	100 TPD	CONTINUOUS OIL REFINERY PLANT	2015
COTTON	MAHARASHTRA	100 TPD	CONTINUOUS PHYSICAL REFINERY PLANT	2016
GROUNDNUT	MAHARASHTRA	100 TPD	CONTINUOUS PHYSICAL REFINERY PLANT	2016
SOYBEAN	MAHARASHTRA	100 TPD	DE-GUMMED SOYBEAN OIL WITH ERECTION & COMMISSIONING.	2016
RICEBRAN	UTTAR PRADESH	300 TPD	CONTINUOUS PHYSICAL DEODORIZATION SECTION	2016
RICE BRAN	BIHAR	300 TPD	CONTINUOUS SOLVENT EXTRACTION PLANT	2016
SOYBAN	GUJARAT	100 TPD	CONTINUOUS PHYSICAL OIL REFINERY PLANT	2016
SUNFLOWER	TAMILNADU	50 TPD	CONTINUOUS MULTIPURPOSE REFINERY PLANT	2017
RICEBRAN	PUNJAB	150TPD	CONTINUOUS PHYSICAL REFINERY PLANT	2017
SOYBEAN	GUJARAT	100 TPD	CONTINUOUS REFINERY PLANT	2018
CANOLA	GUJARAT	100 TPD	CONTINUOUS REFINERY PLANT	2018
RICEBRAN	UTTAR PARDESH	100 TPD	CONTINUOUS PHYSICAL REFINERY PLANT	2018
SOYBEAN	GUJARAT	200 TPD	CONTINUOUS PHYSICAL REFINERY	2018
COTTON	GUJARAT	200 TPD	CONTINUOUS PHYSICAL REFINERY	2018
PALM	GUJARAT	200 TPD	DRY FRACTIONATION SECTION	2018
RICEBRAN	MAHARASHTRA	150 TPD	CONTINUOUS BLEACHING & DEWAXING SECTION	2019
FILTRATION PLANT	MAHARASHTRA	100 TPD	LUBRICANT OIL BLENDING, PURIFICATION & FILTRATION PLANT	2019
FATS/ACID	MAHARASHTRA	5 TPD	CONTINUOUS PHYSICAL REFINERY PLANT FOR OILS/FATS/ACIDS	2019
SUNFLOWER	TAMILNADU	150 TPD	CONTINUOUS MULTIPURPOSE REFINERY PLANT	2019
PALM	TAMILNADU	150 TPD	CONTINUOUS MULTIPURPOSE REFINERY PLANT	2019
FILTRATION	MAHARASHTRA	20TPD	LUBRICANT OIL BLENDING, PURIFICATION & FILTRATION PLANT	2019
RICEBRAN	ANDHRA PRADESH	100 TPD	MODIFICATION & UPGRADATION OF OIL REFINERY PLANT	2019

REF: PPPL/D/22-23/0242

DATE: 25/04/2023

FILTRATION	MUMBAI	20 TPD	LUBRICANT OIL BLENDING, PURIFICATION & FILTRATION PLANT	2019
SOYBEAN	MAHARASHTRA	400 TPD	CONTINUOUS SOLVENT EXTRACTION PLANT	2019
MECHANICAL WAX	HP	15 TPD	MECHANICAL WAX EXTRACTION PLANT	2019
MECHANICAL WAX	HP	10 TPD	MECHANICAL WAX EXTRACTION PLANT	2019
COCONUT	TAMILNADU	30 TPD	PHYSICAL DEO SECTION	2019
MULTIPURPOSE	MAHARASHTRA	120 TPD	CONTINUOUS MULTIPURPOSE REFINERY PLANT	2020
RICEBRAN	MADHYA PRADESH	50 TPD	CONTINUOUS REFINERY PLANT	2020
SOYBEAN	MADHYA PRADESH	50 TPD	CONTINUOUS REFINERY PLANT	2020
SOYBEAN	MAHARASHTRA	100 TPD	CONTINUOUS REFINERY PLANT	2021
FILTRATION PLANT	MAHARASHTRA	100 TPD	LUBRICANT OIL BLENDING, PURIFICATION & FILTRATION PLANT	2022
SOYBEAN	RATNAGIRI	200 TPD	CONTINUOUS PHYSICAL REFINERY	2022
COTTON	RATNAGIRI	200 TPD	CONTINUOUS PHYSICAL REFINERY	2022
PALM	RATNAGIRI	200 TPD	DRY FRACTIONATION SECTION	2022
RICEBRAN	WEST BENGAL	100 TPD	PHYSICAL DEO SECTION	2022
CPO	MAHARASHTRA	200 TPD	CONTINUOUS CPO REFINERY PLANT	2022
SOYBEAN	MAHARASHTRA	1000 TPD	CONTINUOUS SOLVENT EXTRACTION PLANT	2022
SOYBEAN	MAHARASHTRA	300 TPD	CONTINUOUS SOLVENT EXTRACTION - PLANT	2022
SOYBEAN	MAHARASHTRA	1000 TPD	CONTINUOUS SOLVENT EXTRACTION - PLANT	2022
RICEBRAN	KARNATAKA	300 TPD	CONTINUOUS SOLVENT EXTRACTION - PLANT	2022
RICEBRAN	KARNATAKA	125 TPD	CONTINUOUS REFINERY PLANT	2022
RICEBRAN	WEST BENGAL	100 TPD	CONTINUOUS REFINERY PLANT	2022
MULTI SEED	RAJASTHAN	100 TPD	CONTINUOUS REFINERY PLANT	2022
SOYBEAN	MAHARASHTRA	200 TPD	CONTINUOUS SOLVENT EXTRACTION - PLANT	2022
SOYBEAN	PATNA	200 TPD	CONTINUOUS SOLVENT EXTRACTION - PLANT	2022
RICEBRAN	PATNA	150 TPD	CONTINUOUS SOLVENT EXTRACTION - PLANT	2022
SOYBEAN	PATNA	50 TPD	CONTINUOUS REFINERY PLANT	2022
RICEBRAN	PATNA	50 TPD	CONTINUOUS REFINERY PLANT	2022
SOYBEAN	MAHARASHTRA	200 TPD	CONTINUOUS SOLVENT EXTRACTION - PLANT	2022
SOYBEAN	MAHARASHTRA	500 TPD	CONTINUOUS SOLVENT EXTRACTION - PLANT	2022

REF: PPPL/D/22-23/0242

DATE: 25/04/2023

International Clients

SEED/OIL	LOCATION	CAPACITY	TYPE OF PROJECT	YEAR OF PLANT COMPLETION
PALM	DOMINICANA	30 TPD	FRACTIONATION UNIT	2012
COTTON	CENTRAL AFRICA	200 TPD	SEED CLEANING - SECTION	2014
COTTON	CENTRAL AFRICA	100 TPD	OIL MILL PLANT	2014
COOKING OIL PLANT	CENTRAL AFRICA	120 TPD	ERECTION & COMMISSIONING OF 120 TPD COOKING OIL PLANT	2018
PALM	MOZAMBIQUE	120 TPD	NEUTRALIZING & DE-WAXING SECTION.	2018
ETP PLANT	MOZAMBIQUE	120 TPD	COMMISSIONING OF - EFFLUENT TREATMENT PLANT	2018
ACID OIL PLANT	MOZAMBIQUE	20 TPD	SUPPLY, ERECTION & COMMISSIONING	2018
SUNFLOWER	TURKEY	150 TPD	DE WAXING FILTERS	2018
SUNFLOWER	BURUNDI	10 TPD	CONTINUOUS REFINERY PLANT	2018
SHEA NUT	NIGERIA	200 TPD	OIL MILL PLANT	2021
SHEA NUT	NIGERIA	150 TPD	CONTINUOUS SOLVENT EXTRACTION PLANT	2021
SHEA NUT	NIGERIA	100 TPD	WATER TREATMENT PLANT	2021
PALM KERNEL	GHANA	50 TPD	OIL MILL PLANT	2021
MAIZE	GHANA	50 TPD	DRYING UNIT WITH AUTO BAGGING	2021
SHEA NUT	GHANA	300 TPD	OIL MILL WITH SILOS	2022
SHEA NUT	GHANA	200 TPD	CONTINUOUS SOLVENT EXTRACTION	2022
SOYBEAN	GHANA	200 TPD	CONTINUOUS SOLVENT EXTRACTION PLANT	2022
SOYBEAN	GHANA	50 TPD	CONTINUOUS REFINERY PLANT	2022
SOYBEAN	GHANA	100 TPD	WATER TREATMENT PLANT	2022
PALM	BURUNDI	70 TPD	CONTINUOUS REFINERY PLANT	2022
SOYBEAN	EAST AFRICA	200 TPD	CONTINUOUS SOLVENT EXTRACTION PLANT	2022
SOYBEAN	SRILANKA	200 TPD	CONTINUOUS PREPARATORY PLANT	2022
PALM	NEPAL	100 TPD	CONTINUOUS PHYSICAL COOKING OIL PLANT	2022
SUNFLOWER	NEPAL	100 TPD	CONTINUOUS PHYSICAL COOKING OIL PLANT	2022
SOYBEAN	ZAMBIA	300 TPD	CONTINUOUS PHYSICAL COOKING OIL PLANT	2022
MULTIPURPOSE OIL	TURKIYE	100 TPD	CONTINUOUS REFINERY PLANT	2022
MULTIPURPOSE OIL	BURKINA FASO	100 TPD	CONTINUOUS REFINERY PLANT	2023
SOYBEAN	BURKINA FASO	200 TPD	PREPARATORY, DOC & REFINERY SECTION	2023



Engineering for the Vision Next,,,,,

LOOKING FORWARD TO WORK WITH YOU

THANK YOU